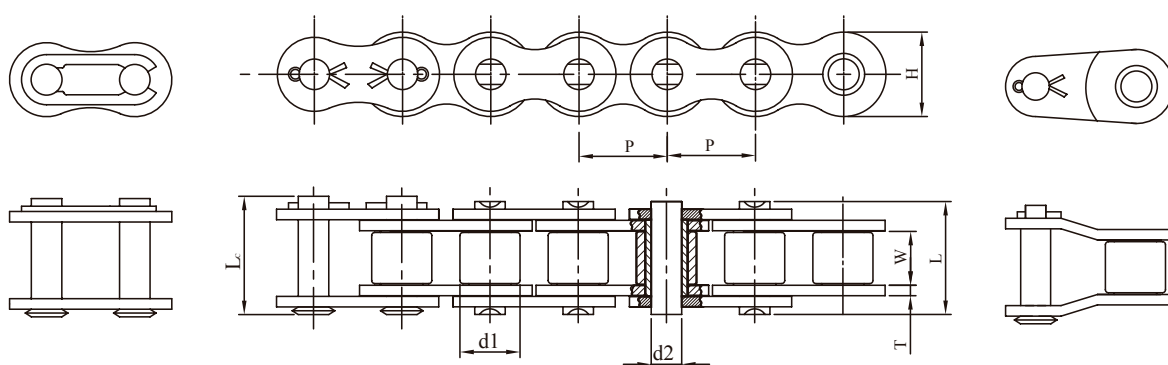




## CORRENTE DE ROLO SIMPLES - ANSI AÇO INOX



Passo	largura entre Placas	Diâmetro do Rolo	Diâmetro do Pino	Comprimento do pino		Altura da Placa	Espessura da Placa	Carga da Trabalho	Carga de Ruptura
				L max	Lc max				
P	W min	d1 max	d2 max	L max	Lc max	H max	T/t	min	
mm	mm	mm	mm	mm	mm	mm	mm	kgf	kgf
6.35	3.10	3.30	2.31	8.0	8.80	5.80	0.75	200	250
9.525	4.68	5.08	3.60	12.15	13.40	8.80	1.25	570	700
12.70	7.85	7.92	3.98	17.80	21.0	12.0	1.50	1000	1250
15.875	9.40	10.16	5.09	21.80	25.0	15.0	2.0	1600	1900
19.05	12.58	11.91	5.96	26.90	31.0	18.0	2.35	2300	2700
25.40	15.75	15.87	7.94	33.50	38.0	24.10	3.20	4100	5000
9.525	5.72	6.35	3.28	13.50	16.80	8.20	1.40/1.10	640	760
12.70	7.75	8.51	4.45	17.0	20.70	11.80	1.50	1250	1500
15.875	9.65	10.16	5.08	19.60	23.70	14.70	1.70	1650	2000
19.05	11.68	12.07	5.72	22.70	27.30	16.10	1.80	2100	2500
25.40	17.02	15.88	8.28	36.10	41.50	21.0	4.0/3.0	4300	5400