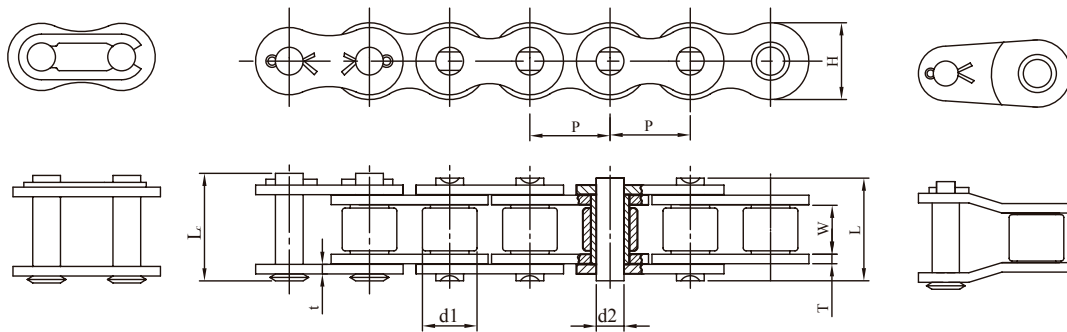
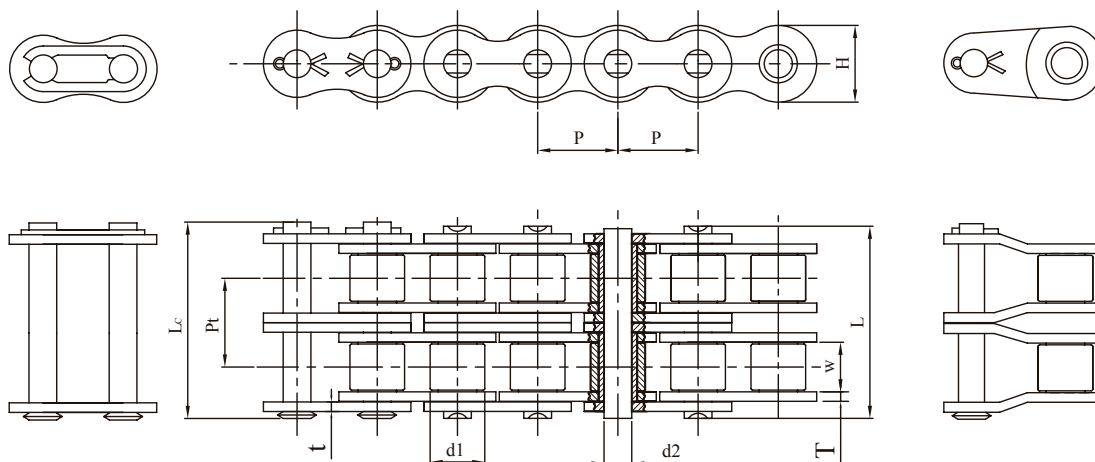


CORRENTE DE ROLO SIMPLES - NORMA DIN



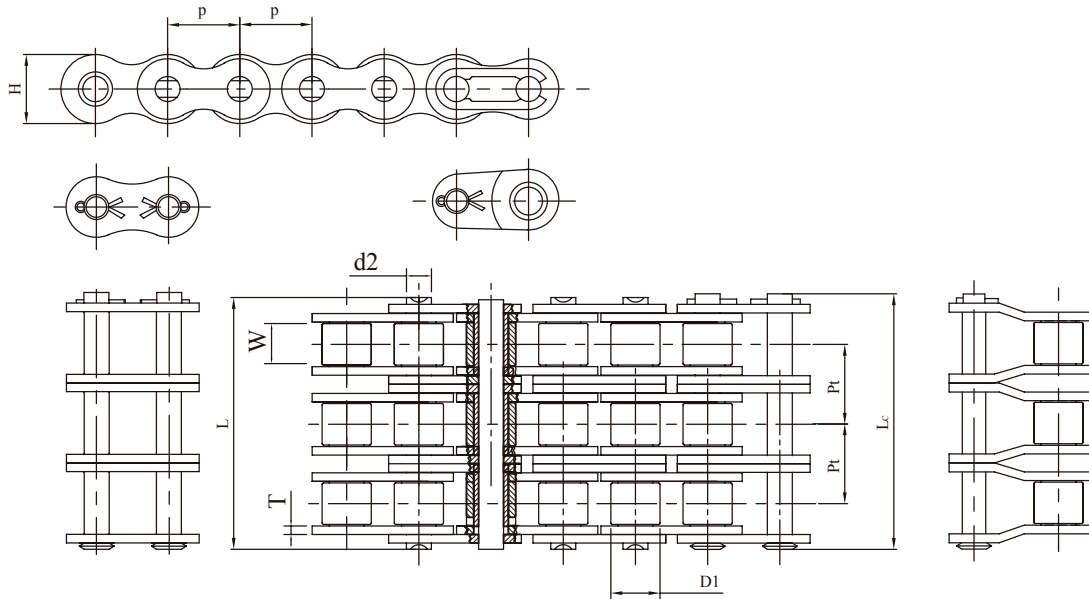
Norma ISO	Passo	Largura entre Placas	Diâmetro do Rolo	Diâmetro do Pino	Comprimento do pino		Altura da Placa	Espessura da Placa	Carga de Trabalho	Carga de Ruptura
	P	W min	d1 max	d2 max	L max	Lc max	H max	T/t	min	
	mm	mm	mm	mm	mm	mm	mm	mm	kgf	kgf
04B	6.0	2.80	4.0	1.85	6.50	7.60	4.10	0.60	300	350
05B	8.0	3.0	5.0	2.31	8.60	11.70	7.10	0.85	500	600
06B	9.525	5.72	6.35	3.28	13.50	16.80	8.20	1.40/1.10	910	1100
08B	12.70	7.75	8.51	4.45	17.0	20.70	11.80	1.50	1820	1950
10B	15.875	9.65	10.16	5.08	19.60	23.70	14.70	1.70	2270	2800
12B	19.05	11.68	12.07	5.72	22.70	27.30	16.10	1.80	2950	3350
16B	25.40	17.02	15.88	8.28	36.10	41.50	21.0	4.0/3.0	6130	7500
20B	31.75	19.56	19.05	10.19	43.20	49.30	26.40	4.50/3.50	9700	10850
24B	38.10	25.40	25.40	14.63	53.40	60.0	33.40	6.0/5.0	16330	18200
28B	44.45	30.99	27.94	15.90	65.10	72.50	37.0	7.40/6.40	20410	23000
32B	50.80	30.99	29.21	17.81	67.40	75.30	42.20	7.0/6.0	25520	28500
40B	63.50	38.10	39.37	22.89	82.60	92.60	52.90	8.50/8.0	36230	40500
48B	76.20	45.72	48.26	29.24	99.10	109.10	63.80	12.0/9.50	57150	63500

CORRENTE DE ROLO DUPLA - NORMA DIN



Norma ISO	Passo	Largura entre Placas	Diâmetro do Rolo	Diâmetro do Pino	Comprimento do pino		Altura da Placa	Espessura da Placa	Carga de Trabalho	Carga de Ruptura	Passo Transversal
	P	W min	d1 max	d2 max	L max	Lc max	H max	T/t	min	kgf	Pt
	mm	mm	mm	mm	mm	mm	mm	mm	kgf	kgf	mm
05B-2R	8.0	3.0	5.0	2.31	14.30	17.40	7.10	0.85	800	1050	5.65
06B-2R	9.525	5.72	6.35	3.28	23.80	27.10	8.20	1.40/1.10	1730	1900	10.24
08B-2R	12.70	7.75	8.51	4.45	31.0	34.90	11.80	1.50	3180	3850	13.92
10B-2R	15.875	9.65	10.16	5.08	36.20	40.30	14.70	1.70	4550	5600	16.59
12B-2R	19.05	11.68	12.07	5.72	42.20	46.80	16.10	1.80	5900	6500	19.46
16B-2R	25.40	17.02	15.88	8.28	68.0	73.40	21.0	4.0/3.0	10820	15000	31.88
20B-2R	31.75	19.56	19.05	10.19	79.0	85.10	26.40	4.50/3.50	17350	21700	36.45
24B-2R	38.10	25.40	25.40	14.63	101.0	107.6	33.40	6.0/5.0	28580	36400	48.36
28B-2R	44.45	30.99	27.94	15.90	124.0	131.40	37.0	7.40/6.40	36740	46000	59.56
32B-2R	50.80	30.99	29.21	17.81	126.0	133.90	42.20	7.0/6.0	45920	57000	58.55
40B-2R	63.50	38.10	39.37	22.89	154.0	164.0	52.90	8.50/8.0	64290	81000	72.29
48B-2R	76.20	45.72	48.26	29.24	190.0	200.0	63.80	12.0/9.50	102050	127000	91.21

CORRENTE DE ROLO TRIPLA - NORMA DIN



Norma ISO	Passo	Largura entre Placas	Diâmetro do Rolo	Diâmetro do Pino	Comprimento do pino		Altura da Placa	Espessura da Placa	Carga de Trabalho	Carga de Ruptura	Passo Transversal
	P	W min	d1 max	d2 max	L max	Lc max	H max	T/t	min		Pt
	mm	mm	mm	mm	mm	mm	mm	mm	kgf	kgf	mm
05B-3	8.0	3.0	5.0	2.31	19.90	22.90	7.10	0.85	1135	1475	5.65
06B-3	9.525	5.72	6.35	3.28	34.0	37.0	8.20	1.40/1.10	2545	3308	10.24
08B-3	12.70	7.75	8.51	4.45	44.90	48.0	11.80	1.50	4550	5915	13.92
10B-3	15.875	9.65	10.16	5.08	52.80	56.0	14.70	1.70	6850	8905	16.59
12B-3	19.05	11.68	12.07	5.72	61.70	65.70	16.10	1.80	8850	11505	19.46
16B-3	25.40	17.02	15.88	8.28	99.90	104.0	21.0	4.0/3.0	16500	21450	31.88
20B-3	31.75	19.56	19.05	10.19	116.10	121.0	26.40	4.50/3.50	25550	33215	36.45
24B-3	38.10	25.40	25.40	14.63	150.20	155.20	33.40	6.0/5.0	44000	47000	48.36
28B-3	44.45	30.99	27.94	15.90	184.30	190.30	37.0	7.40/6.40	54100	60000	59.56
32B-3	50.80	30.99	29.21	17.81	184.50	190.50	42.20	7.0/6.0	68400	75000	58.55
40B-3	63.50	38.10	39.37	22.89	227.20	234.20	52.90	8.50/8.0	97000	120000	72.29
48B-3	76.20	45.72	48.26	29.24	281.60	288.60	63.80	12.0/9.50	153000	180000	91.21